

SCIENCE QUESTION PAPER

2024



SCIENCE

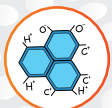
WHERE SCIENCE MEETS THE MIRACLE OF LIFE

MORE Resources?



Physics

[Click HERE](#)



Chemistry

[Click HERE](#)



Maths

[Click HERE](#)



Biology

[Click HERE](#)

EXPLORE dSAT



Aptitude Tests



Career Orientation



One on One Counselling



Career Assessment



1800-102-4109

SCAN here



Series D3CBA/1

Set-1

प्रश्न-पत्र कोड
Q.P. Code

31/1/1

रोल नं.
Roll No.

परीक्षार्थी प्रश्न-पत्र कोड को उत्तर-पुस्तिका के मुख-पृष्ठ पर अवश्य लिखें।
Candidates must write the Q.P. Code on the title page of the answer-book.

विज्ञान SCIENCE

निर्धारित समय : 3 घण्टे

अधिकतम अंक : 80

Time allowed : 3 hours

Maximum Marks : 80

नोट	Note
(I) कृपया जाँच कर लें कि इस प्रश्न-पत्र में मुद्रित पृष्ठ 23 हैं।	(I) Please check that this question paper contains 23 printed pages.
(II) कृपया जाँच कर लें कि इस प्रश्न-पत्र में 39 प्रश्न हैं।	(II) Please check that this question paper contains 39 questions.
(III) प्रश्न-पत्र में दाहिने हाथ की ओर दिए गए प्रश्न-पत्र कोड को परीक्षार्थी उत्तर-पुस्तिका के मुख-पृष्ठ पर लिखें।	(III) Q.P. Code given on the right hand side of the question paper should be written on the title page of the answer-book by the candidate.
(IV) कृपया प्रश्न का उत्तर लिखना शुरू करने से पहले, उत्तर-पुस्तिका में प्रश्न का क्रमांक अवश्य लिखें।	(IV) Please write down the Serial Number of the question in the answer-book before attempting it.
(V) इस प्रश्न-पत्र को पढ़ने के लिए 15 मिनट का समय दिया गया है। प्रश्न-पत्र का वितरण पूर्वाह्न में 10.15 बजे किया जाएगा। 10.15 बजे से 10.30 बजे तक छात्र केवल प्रश्न-पत्र को पढ़ेंगे और इस अवधि के दौरान वे उत्तर-पुस्तिका पर कोई उत्तर नहीं लिखेंगे।	(V) 15 minute time has been allotted to read this question paper. The question paper will be distributed at 10.15 a.m. From 10.15 a.m. to 10.30 a.m., the students will read the question paper only and will not write any answer on the answer-book during this period.

31/ 31/1/1

1

P.T.O.

General Instructions :

Read the following instructions very carefully and strictly follow them :

- (i) This question paper comprises **39** questions. **All** questions are compulsory.
- (ii) This question paper is divided into **five** sections – **A, B, C, D** and **E**.
- (iii) **Section A** – Question Nos. **1** to **20** are multiple choice questions. Each question carries **1** mark.
- (iv) **Section B** – Question Nos. **21** to **26** are very short answer type questions. Each question carries **2** marks. Answer to these questions should be in the range of **30** to **50** words.
- (v) **Section C** – Question Nos. **27** to **33** are short answer type questions. Each question carries **3** marks. Answer to these questions should be in the range of **50** to **80** words.
- (vi) **Section D** – Question Nos. **34** to **36** are long answer type questions. Each question carries **5** marks. Answer to these questions should be in the range of **80** to **120** words.
- (vii) **Section E** – Question Nos. **37** to **39** are of **3** source-based/case-based units of assessment carrying **4** marks each with sub-parts.
- (viii) There is no overall choice. However, an internal choice has been provided in some sections. Only one of the alternatives has to be attempted in such questions.

SECTION – A

Select and write the most appropriate option out of the four options given for each of the questions 1-20. There is no negative mark for the incorrect response.

1. When 2 mL of sodium hydroxide solution is added to few pieces of granulated zinc in a test tube and then warmed, the reaction that occurs can be written in the form of a balanced chemical equation as : 1
 - (a) $\text{NaOH} + \text{Zn} \rightarrow \text{NaZnO}_2 + \text{H}_2\text{O}$
 - (b) $2\text{NaOH} + \text{Zn} \rightarrow \text{Na}_2\text{ZnO}_2 + \text{H}_2$
 - (c) $2\text{NaOH} + \text{Zn} \rightarrow \text{NaZnO}_2 + \text{H}_2$
 - (d) $2\text{NaOH} + \text{Zn} \rightarrow \text{Na}_2\text{ZnO}_2 + \text{H}_2\text{O}$
2. Select from the following a decomposition reaction in which source of energy for decomposition is light : 1
 - (a) $2\text{FeSO}_4 \rightarrow \text{Fe}_2\text{O}_3 + \text{SO}_2 + \text{SO}_3$
 - (b) $2\text{H}_2\text{O} \rightarrow 2\text{H}_2 + \text{O}_2$
 - (c) $2\text{AgBr} \rightarrow 2\text{Ag} + \text{Br}_2$
 - (d) $\text{CaCO}_3 \rightarrow \text{CaO} + \text{CO}_2$

3. A metal and a non-metal that exists in liquid state at the room temperature are respectively : 1
- (a) Bromine and Mercury
 - (b) Mercury and Iodine
 - (c) Mercury and Bromine
 - (d) Iodine and Mercury
4. Carbon compounds : 1
- (i) are good conductors of electricity.
 - (ii) are bad conductors of electricity.
 - (iii) have strong forces of attraction between their molecules.
 - (iv) have weak forces of attraction between their molecules.
- The correct statements are :
- (a) (i) and (ii)
 - (b) (ii) and (iii)
 - (c) (ii) and (iv)
 - (d) (i) and (iii)
5. Consider the following compounds : 1
- FeSO_4 ; CuSO_4 ; CaSO_4 ; Na_2CO_3
- The compound having maximum number of water of crystallisation in its crystalline form in one molecule is :
- (a) FeSO_4
 - (b) CuSO_4
 - (c) CaSO_4
 - (d) Na_2CO_3
6. Oxides of aluminium and zinc are : 1
- (a) acidic
 - (b) basic
 - (c) amphoteric
 - (d) neutral
7. $\text{MnO}_2 + 4\text{HCl} \rightarrow \text{MnCl}_2 + 2\text{H}_2\text{O} + \text{Cl}_2$ 1
- The reaction given above is a redox reaction because in this case :
- (a) MnO_2 is oxidised and HCl is reduced.
 - (b) HCl is oxidised.
 - (c) MnO_2 is reduced.
 - (d) MnO_2 is reduced and HCl is oxidised.

8. Consider the following statements :

- (i) The sex of a child is determined by what it inherits from the mother.
- (ii) The sex of a child is determined by what it inherits from the father.
- (iii) The probability of having a male child is more than that of a female child.
- (iv) The sex of a child is determined at the time of fertilisation when male and female gametes fuse to form a zygote.

The correct statements are :

1

- (a) (i) and (iii)
- (b) (ii) and (iv)
- (c) (iii) and (iv)
- (d) (i), (iii) and (iv)

9. Chromosomes :

- (i) carry hereditary information from parents to the next generation.
- (ii) are thread like structures located inside the nucleus of an animal cell.
- (iii) always exist in pairs in human reproductive cells.
- (iv) are involved in the process of cell division.

The correct statements are :

1

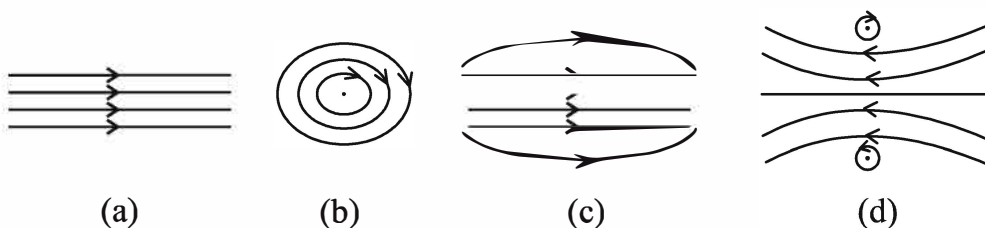
- (a) (i) and (ii)
- (b) (iii) and (iv)
- (c) (i), (ii) and (iv)
- (d) (i) and (iv)

10. In a nerve cell, the site where the electrical impulse is converted into a chemical signal is known as :

1

- (a) Axon
- (b) Dendrites
- (c) Neuromuscular junction
- (d) Cell body

11. A stomata closes when :
- (i) it needs carbon dioxide for photosynthesis.
 - (ii) it does not need carbon dioxide for photosynthesis.
 - (iii) water flows out of the guard cells.
 - (iv) water flows into the guard cells.
- The correct reason(s) in this process is/are : 1
- (a) (i) only
 - (b) (i) and (iii)
 - (c) (ii) and (iii)
 - (d) (ii) and (iv)
12. At what distance from a convex lens should an object be placed to get an image of the same size as that of the object on a screen ? 1
- (a) Beyond twice the focal length of the lens.
 - (b) At the principal focus of the lens.
 - (c) At twice the focal length of the lens.
 - (d) Between the optical centre of the lens and its principal focus.
13. The lens system of human eye forms an image on a light sensitive screen, which is called as : 1
- (a) Cornea
 - (b) Ciliary muscles
 - (c) Optic nerves
 - (d) Retina
14. The pattern of the magnetic field produced inside a current carrying solenoid is : 1



15. Identify the food chain in which the organisms of the second trophic level are missing : 1
- (a) Grass, goat, lion
 - (b) Zooplankton, Phytoplankton, small fish, large fish
 - (c) Tiger, grass, snake, frog
 - (d) Grasshopper, grass, snake, frog, eagle
16. In which of the following organisms, multiple fission is a means of asexual reproduction ? 1
- (a) Yeast
 - (b) Leishmania
 - (c) Paramecium
 - (d) Plasmodium

For Q. Nos. 17 to 20, two statements are given – One labelled as **Assertion (A)** and the other labelled as **Reason (R)**. Select the correct answer to these questions from the codes (a), (b), (c) and (d) as given below :

- (a) Both Assertion (A) and Reason (R) are true and Reason (R) is the correct explanation of the Assertion (A).
- (b) Both Assertion (A) and Reason (R) are true, but Reason (R) is not the correct explanation of the Assertion (A).
- (c) Assertion (A) is true, but Reason (R) is false.
- (d) Assertion (A) is false, but Reason (R) is true.

17. **Assertion (A)** : Hydrogen gas is not evolved when zinc reacts with nitric acid.
Reason (R) : Nitric acid oxidises the hydrogen gas produced to water and itself gets reduced. 1
18. **Assertion (A)** : Accumulation of harmful chemicals is maximum in the organisms at the highest trophic level of a food chain.
Reason (R) : Harmful chemicals are sprayed on the crops to protect them from diseases and pests. 1

19. **Assertion (A) :** The rate of breathing in aquatic organisms is much faster than in terrestrial organisms.
Reason (R) : The amount of oxygen dissolved in water is very high as compared to the amount of oxygen in air. 1
20. **Assertion (A) :** The rainbow is a natural spectrum of sunlight in the sky.
Reason (R) : Rainbow is formed in the sky when the sun is overhead and water droplets are also present in air. 1

SECTION – B

21. Name the type of chemical reaction in which calcium oxide reacts with water. Justify your answer by giving balanced chemical equation for the chemical reaction. 2
22. State one role of each of the following in human digestive system : 2
- (i) Hydrochloric acid
 - (ii) Villi
 - (iii) Anal Sphincter
 - (iv) Lipase
23. (A) How is the movement of leaves of a sensitive plant different from the downward movement of the roots ? 2

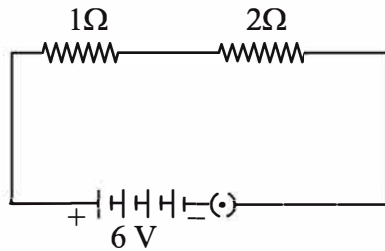
OR

- (B) There is a hormone which regulates carbohydrate, protein and fat metabolism in our body. Name the hormone and the gland which secretes it. Why is it important for us to have iodised salt in our diet? 2
24. An object is placed at a distance of 10 cm from a convex mirror of focal length 15 cm. Find the position of the image formed by the mirror. 2
25. (A) Show how you would connect three resistors each of resistance 6Ω , so that the combination has a resistance of 9Ω . Also justify your answer. 2

OR

- (B) In the given circuit calculate the power consumed in watts in the resistor of $2\ \Omega$:

2



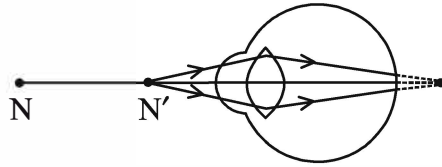
26. (i) Two magnetic field lines do not intersect each other. Why ? 2
 (ii) How is a uniform magnetic field in a given region represented ?
 Draw a diagram in support of your answer.

SECTION – C

27. Write one chemical equation each for the chemical reaction in which the following have taken place : 3
 (i) Change in colour
 (ii) Change in temperature
 (iii) Formation of precipitate
 Mention colour change/temperature change (rise/fall)/compound precipitated along with equation.
28. (i) The pH of a sample of tomato juice is 4.6. How is this juice likely to be in taste ? Give reason to justify your answer. 1
 (ii) How do we differentiate between a strong acid and a weak base in terms of ion-formation in aqueous solutions ? 1
 (iii) The acid rain can make the survival of aquatic animals difficult. How ? 1
29. (i) Why is respiratory pigment needed in multicellular organisms with large body size ? 1
 (ii) Give reasons for the following : 2
 (a) Rings of cartilage are present in the throat.
 (b) Lungs always contain a residual volume of air.
 (c) The diaphragm flattens and ribs are lifted up when we breathe in.
 (d) Walls of alveoli contain an extensive network of blood vessels.

30. Define reflex action. With the help of a flow chart show the path of a reflex action such as sneezing. 3

31. Study the diagram given below and answer the questions that follow : 3



(i) Name the defect of vision represented in the diagram. Give reason for your answer.

(ii) List two causes of this defect.

(iii) With the help of a diagram show how this defect of vision is corrected.

32. Name and state the rule to determine the direction of a : 3

(i) magnetic field produced around a current carrying straight conductor.

(ii) force experienced by a current carrying straight conductor placed in a magnetic field which is perpendicular to it.

33. (A) Plants → Deer → Lion

In the given food chain, what will be the impact of removing all the organisms of second trophic level on the first and third trophic level? Will the impact be the same for the organisms of the third trophic level in the above food chain if they were present in a food web? Justify. 3

OR

(B) A gas 'X' which is a deadly poison is found at the higher levels of atmosphere and performs an essential function.

Name the gas and write the function performed by this gas in the atmosphere. Which chemical is linked to the decrease in the level of this gas? What measures have been taken by an international organization to check the depletion of the layer containing this gas? 3

SECTION – D

34. (A) (i) Define a homologous series of carbon compounds. **5**
- (ii) Why is the melting and boiling points of C_4H_8 higher than that of C_3H_6 or C_2H_4 ?
- (iii) Why do we **NOT** see any gradation in chemical properties of a homologous series compounds ?
- (iv) Write the name and structures of (i) aldehyde and (ii) ketone with molecular form C_3H_6O .

OR

- (B) (i) Write the name and structure of an organic compound 'X' **5** having two carbon atoms in its molecule and its name is suffixed with '-ol'.
- (ii) What happens when 'X' is heated with excess concentrated sulphuric acid at 443 K? Write chemical equation for the reaction stating the conditions for the reaction. Also state the role played by concentrated sulphuric acid in the reaction.
- (iii) Name and draw the electron dot structure of hydrocarbon produced in the above reaction.
35. (A) (i) Name three techniques/devices used by human females to avoid pregnancy. Mention the side effects caused by each. **5**
- (ii) What will happen if in a human female (a) fertilisation takes place, (b) an egg is not fertilised ?

OR

- (B) (i) Draw a diagram showing spore formation in Rhizopus and label the (a) reproductive and (b) non-reproductive parts. Why does Rhizopus not multiply on a dry slice of bread ? **5**
- (ii) Name and explain the process by which reproduction takes place in Hydra.

36. (A) (i) Define electric power. Express it in terms of potential difference (V) and resistance (R). 5
- (ii) An electric oven is designed to work on the mains voltage of 220 V. This oven consumes 11 units of electrical energy in 5 hours. Calculate :
- (a) power rating of the oven
- (b) current drawn by the oven
- (c) resistance of the oven when it is red hot

OR

- (B) (i) Write the relation between resistance R and electrical resistivity ρ of the material of a conductor in the shape of cylinder of length l and area of cross-section A. Hence derive the SI unit of electrical resistivity. 5
- (ii) The resistance of a metal wire of length 3 m is 60Ω . If the area of cross-section of the wire is $4 \times 10^{-7} \text{ m}^2$, calculate the electrical resistivity of the wire.
- (iii) State how would electrical resistivity be affected if the wire (of part 'ii') is stretched so that its length is doubled. Justify your answer.

SECTION – E

Q. Nos. 37-39 are source-based/case-based questions with 2 to 3 short sub-parts. Internal choice is provided in one of these sub-parts :

37. The metals produced by various reduction processes are not very pure. They contain impurities, which must be removed to obtain pure metals. The most widely used method for refining impure metals is electrolytic refining.

- (i) What is the cathode and anode made of in the refining of copper by this process ? 1
- (ii) Name the solution used in the above process and write its formula. 1
- (iii) (A) How copper gets refined when electric current is passed in the electrolytic cell ? 2

OR

- (iii) (B) You have two beakers 'A' and 'B' containing copper sulphate solution. What would you observe after about 2 hours if you dip a strip of zinc in beaker 'A' and a strip of silver in beaker 'B'? Give reason for your observations in each case. 2

38. Mendel worked out the rules of heredity by working on garden pea using a number of visible contrasting characters. He conducted several experiments by making a cross with one or two pairs of contrasting characters of pea plant. On the basis of his observations he gave some interpretations which helped to study the mechanism of inheritance.

- (i) When Mendel crossed pea plants with pure tall and pure short characteristics to produce F_1 progeny, which two observations were made by him in F_1 plants? 1
- (ii) Write one difference between dominant and recessive trait. 1
- (iii) (A) In a cross with two pairs of contrasting characters

RRYY × rryy
(Round Yellow) (Wrinkled Green)

Mendel observed 4 types of combinations in F_2 generation. By which method did he obtain F_2 generation? Write the ratio of the parental combinations obtained and what conclusions were drawn from this experiment. 2

OR

- (iii) (B) Justify the statement :
“It is possible that a trait is inherited but may not be expressed.” 2

39. Study the data given below showing the focal length of three concave mirrors A, B and C and the respective distances of objects placed in front of the mirrors :

Case	Mirror	Focal Length (cm)	Object Distance (cm)
1	A	20	45
2	B	15	30
3	C	30	20

- (i) In which one of the above cases the mirror will form a diminished image of the object? Justify your answer. 1
- (ii) List two properties of the image formed in case 2. 1
- (iii) (A) What is the nature and size of the image formed by mirror C? Draw ray diagram to justify your answer. 2

OR

- (iii) (B) An object is placed at a distance of 18 cm from the pole of a concave mirror of focal length 12 cm. Find the position of the image formed in this case. 2



Deeksha's balanced approach to PU and JEE prep, with weekly assessments and dedicated hours, refined my strategy. Supportive teachers and a great learning environment made all the difference.

**P Sai Lekhya Deeksha Vedantu
Vidyanagar 2022-24 (Science)**



Admission to Deeksha was transformative. The VidyaDaan scholarship enabled my PU studies, while my teachers instilled skills in technology and time management. Confident in my preparation, I aim to clear the CA Foundation exam by 2025.

**Shamsudin, Deeksha Vedantu
Kengeri 2022-24 (Comm.)**



With Deeksha's expert guidance, I effectively balanced JEE and PU preparation, achieving a 99.59 percentile in JEE Main. The weekly tests, model papers, and bite-sized materials were instrumental in mastering PU topics and staying exam-ready.

**Neha Prabhu, Deeksha Main
Campus 2022-24 (Science)**



DEEKSHA campuses

- Deeksha Vedantu, Indiranagar, Bangalore
- Deeksha Vedantu, Main Campus, Bangalore
- Deeksha Vedantu, Yelahanka, Bangalore
- Deeksha Vedantu, Mahalakshmpuram, Bangalore
- Deeksha Vedantu, Vidyanagar (Residential Campus), Bangalore



NURTURING **SUCCESS**
OF EVERY **CHILD**

EXPLORE dSAT



**Aptitude
Tests**



**Career
Orientation**



**One on One
Counselling**



**Career
Assessment**



1800-102-4109

SCAN here

